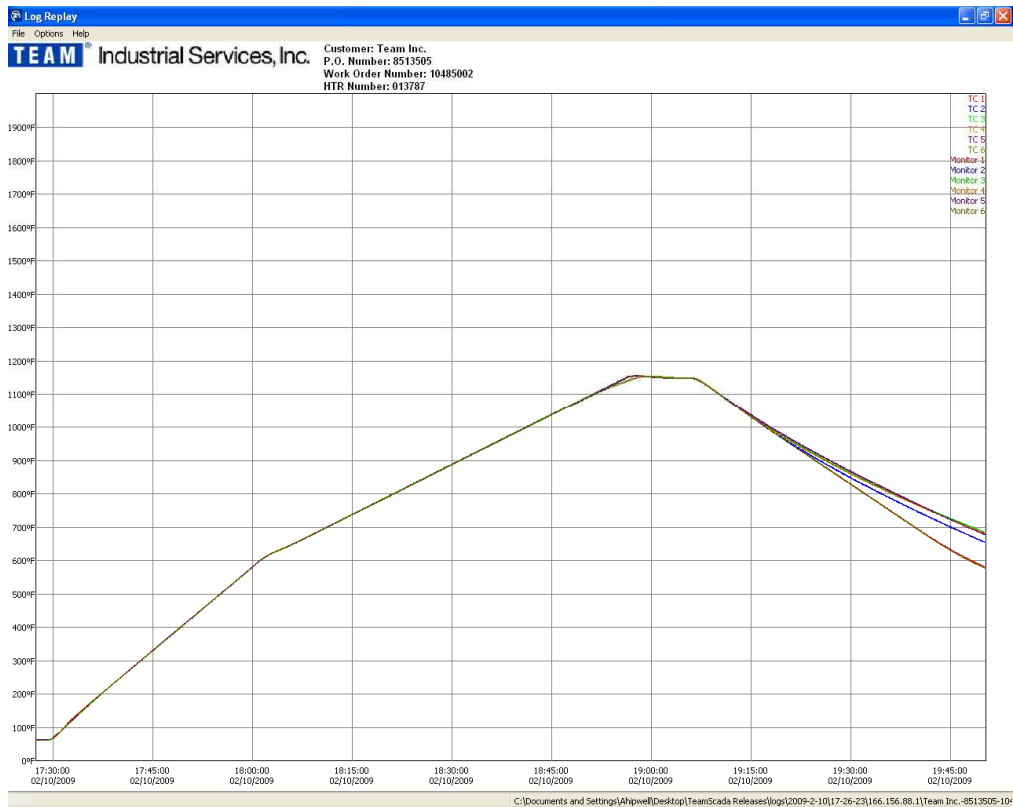


TeamScada View™



** Operation Guide **

Team Industrial Services
3005 Silver Drive
Columbus, OH 43224
(866) 302-4328
(614) 263-1808
December 2010
Revision 2

Table of Contents

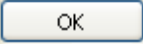
1.0	STARTING TEAMSCADA VIEW™	1
2.0	TREND CHART SCREEN	2
3.0	TREND CHART CURSORS.....	3
4.0	TREND CHART MENUS	4
5.0	TREND CHART ZOOM.....	6
6.0	TECHNICAL SUPPORT	8

1.0 STARTING TEAMSCADA VIEW™

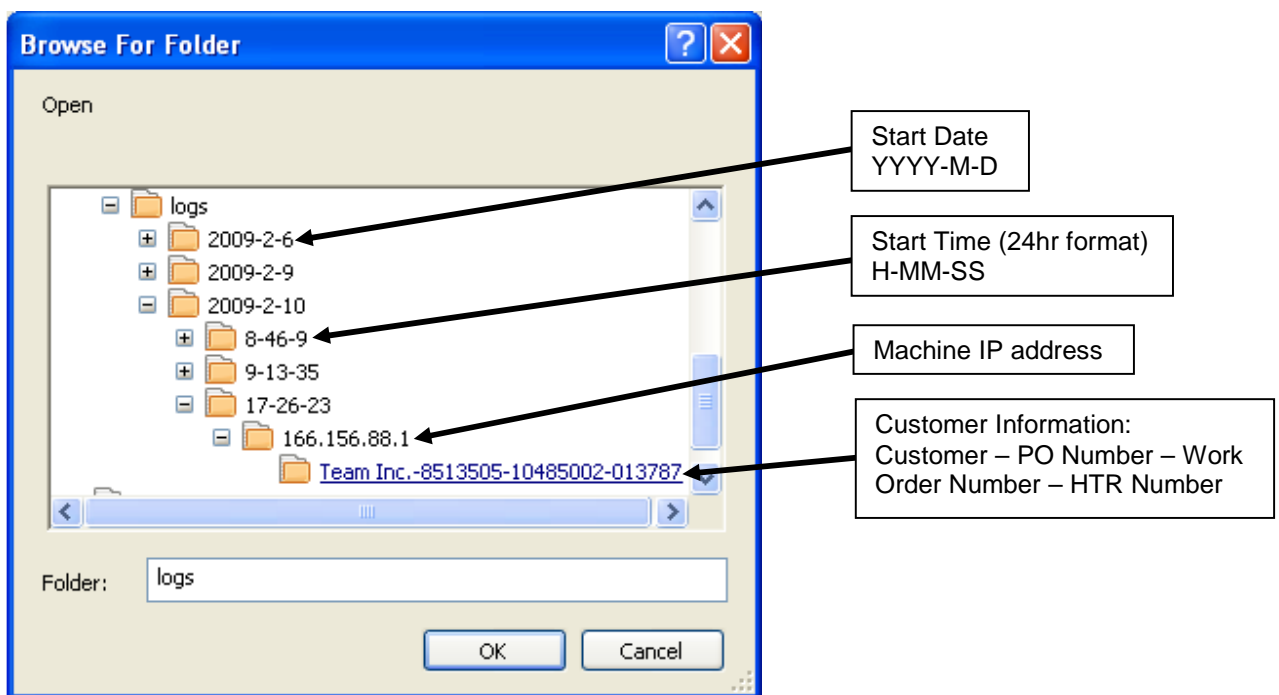
TeamScada View™ is a program which is supplied in order to view and print log files without the need for the full TeamScada™ software. Double-click on the TeamScada View™ icon in order to start the program.



TeamScada
View.exe

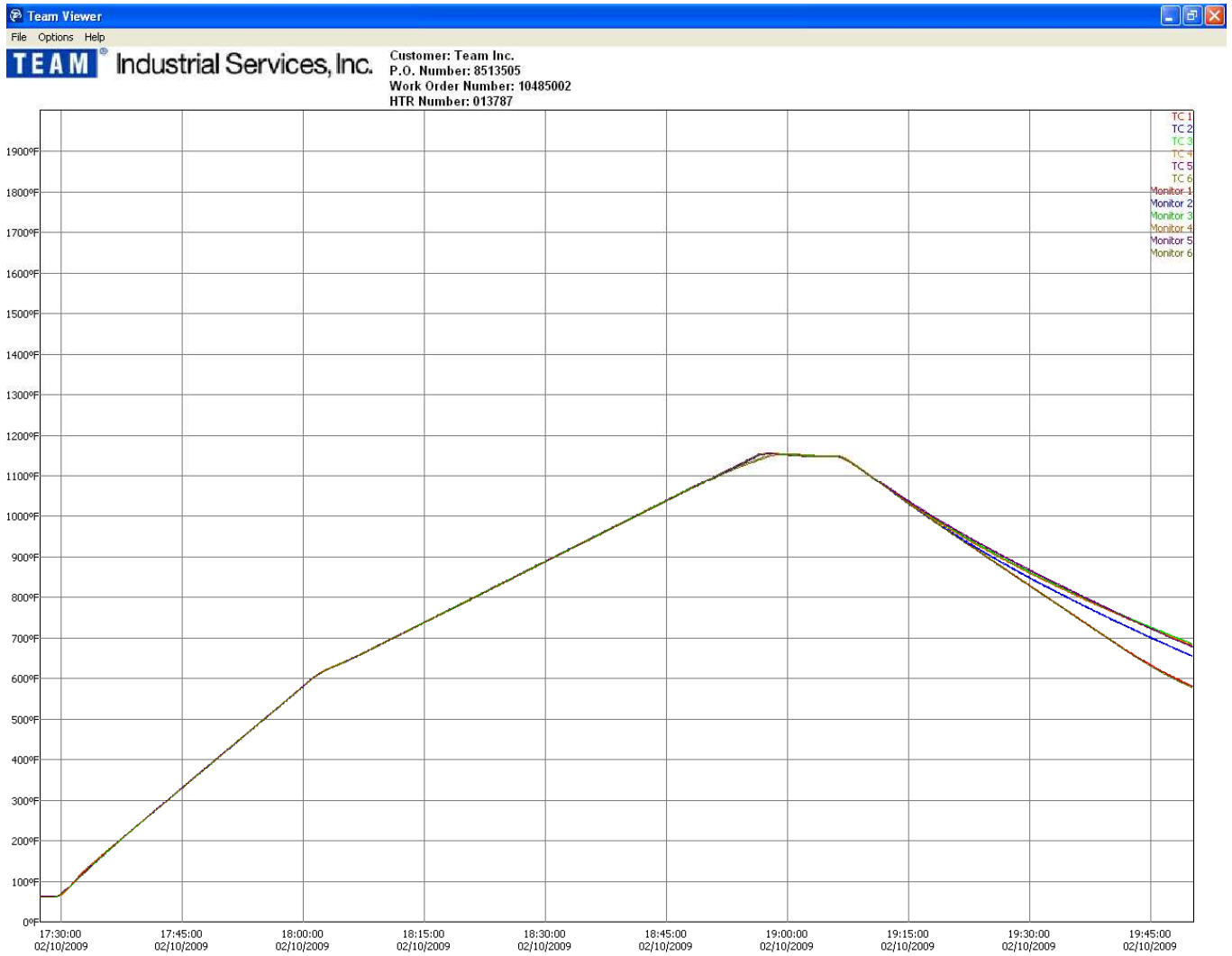
The program begins by requesting the location of the desired log file. Locate the log file and click the  button.

Log files are stored in the following format:



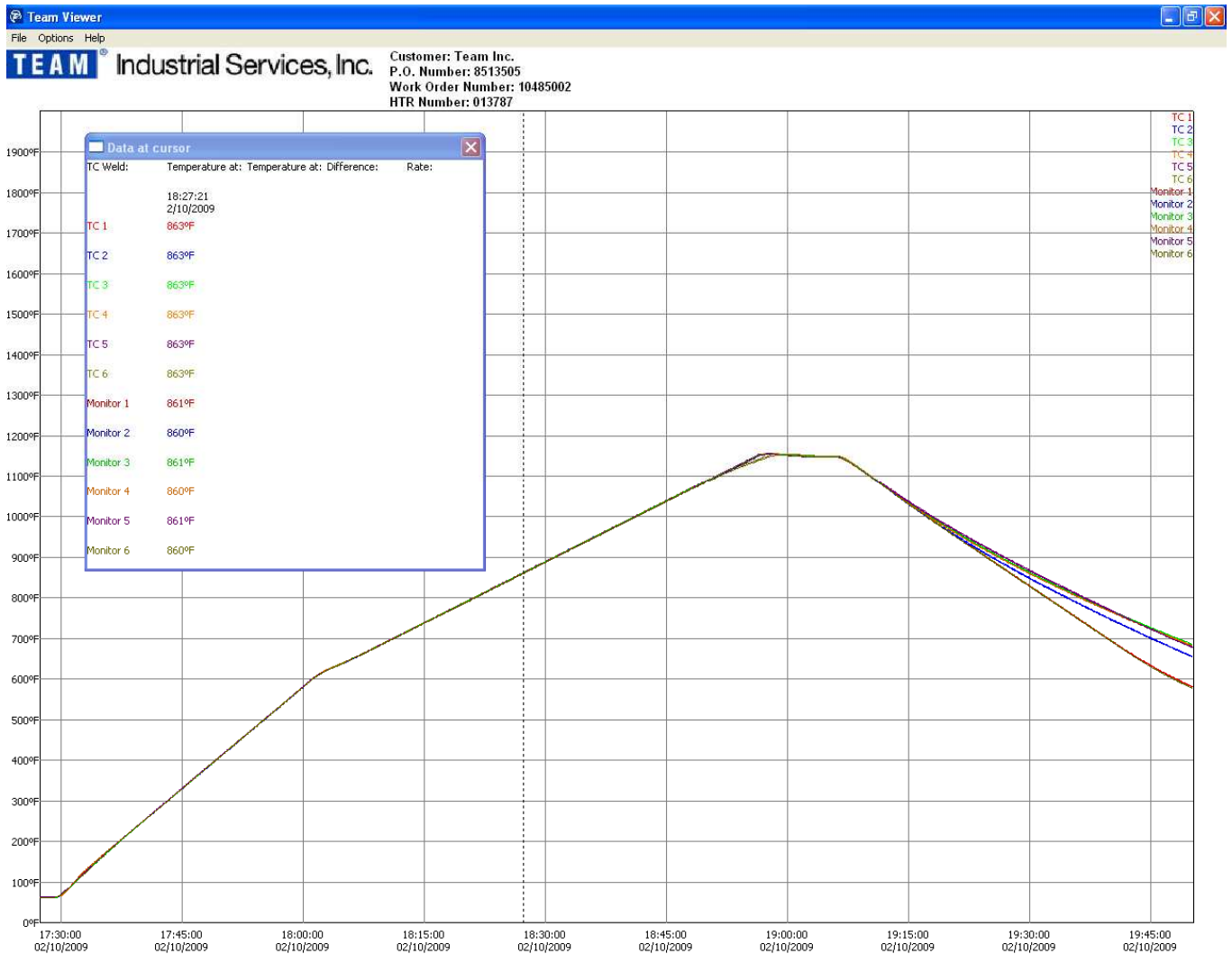
2.0 TREND CHART SCREEN

The trend chart screen displays all thermocouple inputs as a graph. The x-axis displays the time interval subdivided by default into 15 minute increments. The y-axis displays the temperature from 0°F to 2000°F subdivided by default into 100°F increments. Both of these increments may be changed by the user.

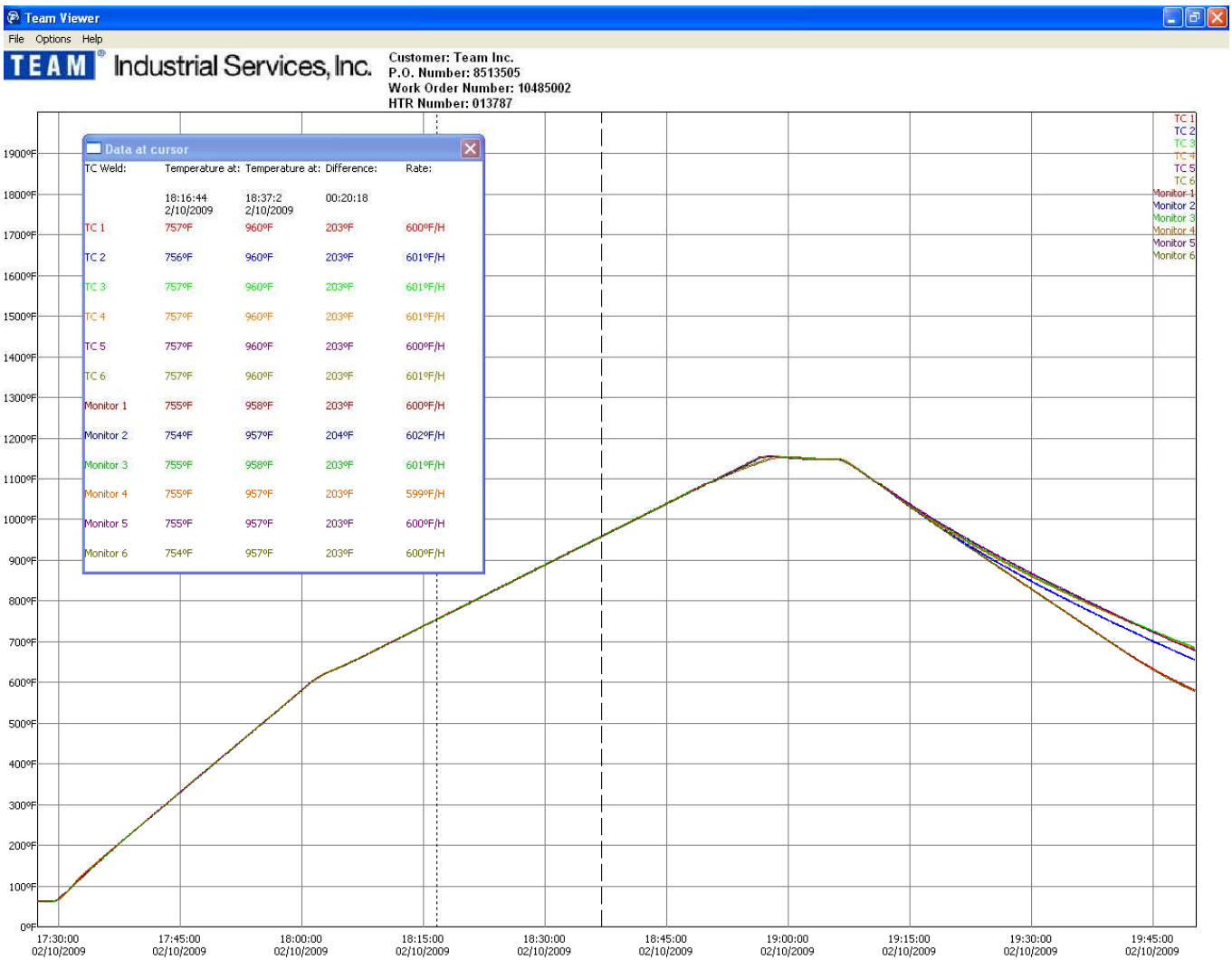


3.0 TREND CHART CURSORS

Using the mouse or touchpad, left-click or right-click anywhere on the chart to place a cursor. A pop-up window opens to indicate the values at the point where the cursor crosses the graph.

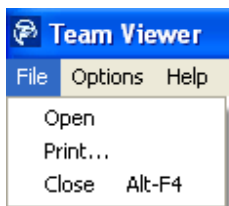


Using the mouse or touchpad to right-click (or left-click if right-click was used to place the first cursor) on the chart, after the first cursor has been placed on the graph, will result in a second cursor being placed. The pop-up window will now display temperature and time at cursor one, temperature and time at cursor two, the difference in temperature and time between the two cursors as well as the average rate of increase or decrease in temperature between the two cursors. A cursor placed by a left-click will appear dotted while a cursor placed by a right-click will be dashed.

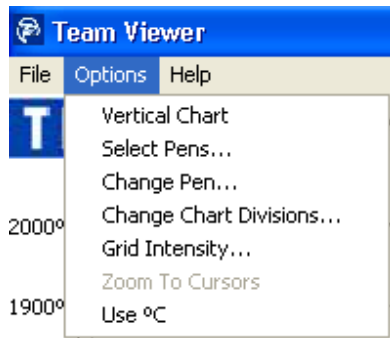


4.0 TREND CHART MENUS

In order to print a chart as it appears on the screen, click on the **FILE** menu and then click **PRINT**. Another log file may be opened by clicking **FILE** and **OPEN** (*Section 1.0*).

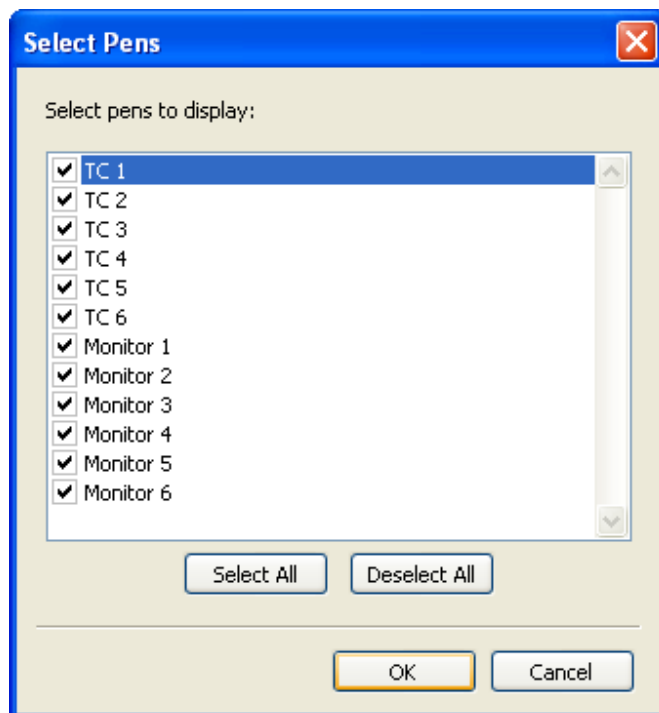


The options menu allows the user to change the look or zoom the graph in a variety of ways.



Vertical Chart: changes the chart orientation from horizontal to vertical. The chart orientation may be changed at any time. In order to revert back to a horizontal chart, deselect the vertical chart option in the menu. TeamScada™ starts with charts in horizontal orientation by default.

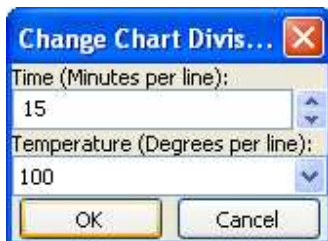
Select Pens: allows the user to select what pens are viewed on the graph. This can be done either for clarity while viewing or for printing charts containing only selected pens.



Change Pen: allows the user to change the pen name and pen color.



Change Chart Divisions: Changing the value for the time division does not change the length of time that is covered by the chart. The time division remains the same based on the current view but divides the chart into the selected number of pieces. By default the chart is separated into 15 minute intervals. The chart time may be divided by any number of time divisions ranging from 1 to 60 minutes. Changing the value of the temperature divisions will display a grid line in intervals of the selected value. The choices are 5, 10, 20, 25, 50 and 100 degree increments. The chart divisions will print on the chart.



Grid Intensity: can be used to change the chart gridlines lighter or darker. Selecting this option will open the "Gridline Intensity" window. Simply move the slider in the desired direction and click **OK**.



Zoom To Cursors: (see Section 5.0).

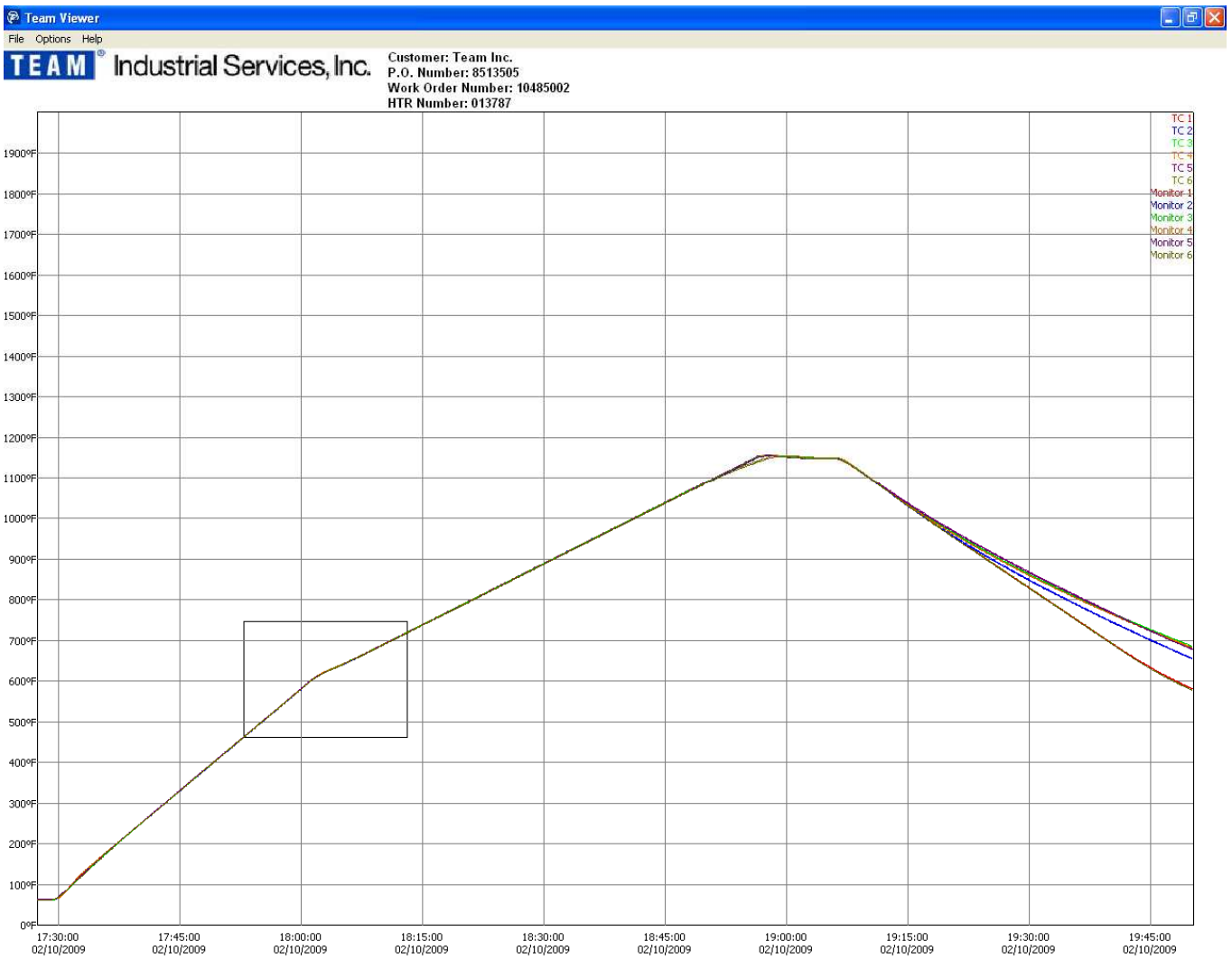
Use °C: changes the temperature scale to reflect °C if checked and °F if unchecked. When °C is selected the chart ranges from -18°C to 1093°C. This setting is saved and will stay in the scale selected until changed.

5.0 TREND CHART ZOOM

Zoom To Cursors: becomes active when two cursors have been placed on the chart (Section 3.0) and will zoom to the section within the cursors. This zoom will not affect the temperature scale but will change the time scale on the chart.

Zoom Window: Another option for zooming a section of a chart, besides zoom to cursors and auto zoom is the "window" method. Using the mouse or touchpad, left-click and drag to draw a box around the portion of the graph to be zoomed. A window will be opened showing the contents of the drawn box. This method will rescale the time axis as well as the temperature axis.

Regardless of the zoom method used, a new window is opened for every zoom performed so viewing the zoomed information and the original chart are done simply by switching between windows.



6.0 TECHNICAL SUPPORT

For technical support regarding TeamScada View™ contact:

Team Industrial Services, Inc.
3005 Silver Drive
Columbus, OH 43224
Telephone: (614) 263-1808
(866) 302-4328
Fax: (614) 263-2847